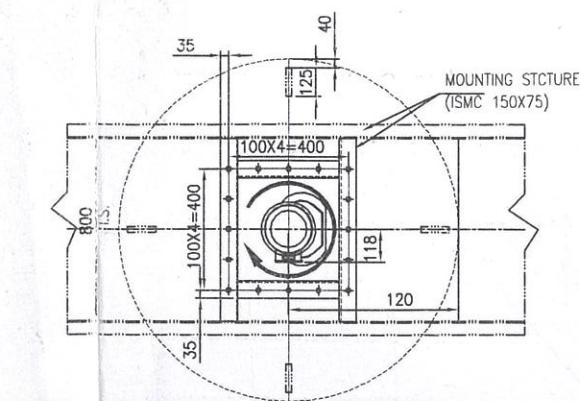
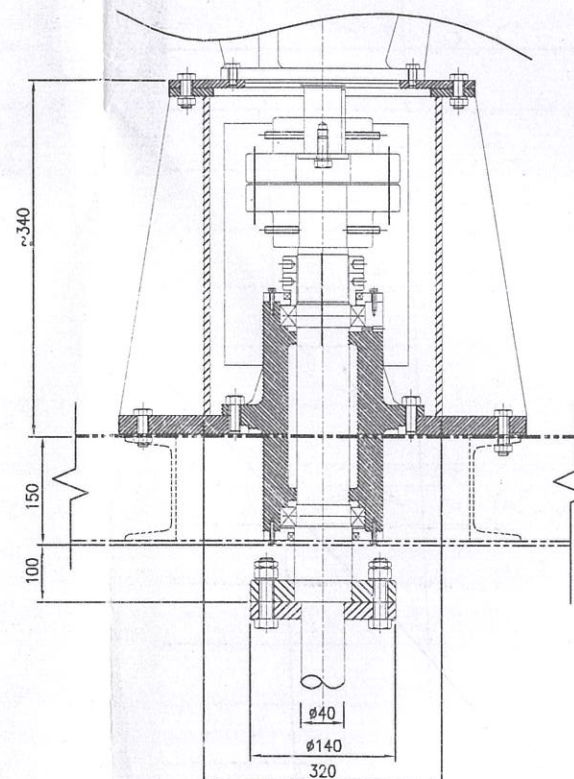


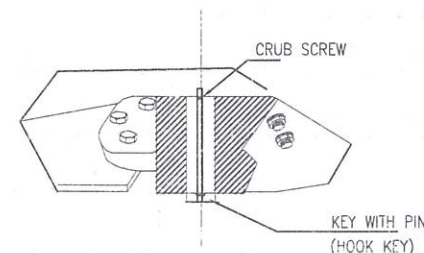
SECTIONAL ELEVATION



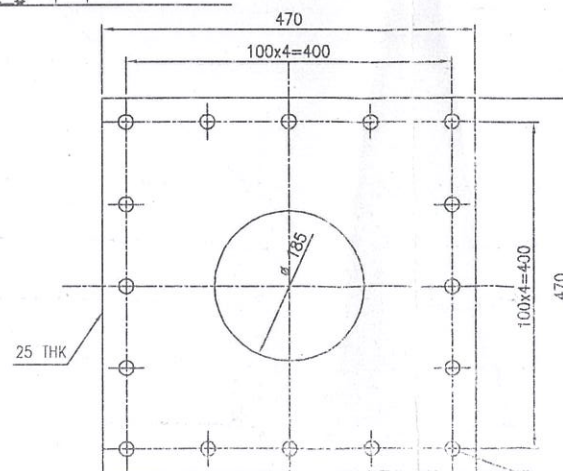
PLAN



DETAIL AT "P"



DETAIL AT 'X'



MOUNTING PLATE DETAIL

- NOTES :
1. AGITATOR MOUNTING FASTENERS & GASKETS IN UCIL SCOPE.
 2. MINIMUM OPENING REQUIRED IS 200MM TO PASS THE IMPELLER BLADES.
 3. MIN. OPENING REQUIRED IS 250MM AT THE VESSEL TOP TO PASS SHAFT & IMP. HUB.
 4. SHAFT DEFLECTION 1MM PER METER
 5. ALL WETTED PART HARDWARE ARE IN SS : 304 & NONWETTED ARE IN IS1367 B8.8

PAINTING SPECIFICATION :-

FOR NONWETTED PARTS, TWO COATS OF EPOXY RESIN BASED ZINC RICH PRIMER COMPATIBLE WITH SUBSEQUENT OVERCOAT OF EPOXY PAINT WILL BE APPLIED OF WHICH THE DRY FILM THICKNESS (DFT) WILL BE 25 MICRON (MIN.) PER COAT. THE OVER COATING WILL BE DONE WITH TWO COATS OF EPOXY GLOSSY ENAMEL PAINT OF APPROVED SHADE, HAVING DFT 50 MICRON (MIN.) PER COAT AFTER THIS ONE COAT OF ACRYLIC POLYURETHANE CLEAR PAINT WILL BE APPLIED AS FINISHING COAT, HAVING MINIMUM DFT 35 MICRON (MIN.)

	① THIS IS NOT TO SCALE
MILLIMETRES	② DIMENSIONS ARE IN MM
SS : 304	③ MATERIAL - WETTED PARTS
	④ TANK BAFFLES
86	⑤ IMPELLER SPEED (REV/MIN)
3(A510 E32)	NUMBERS OF BLADES (TYPE)
3(A510 E32)	UPPER IMPELLER :
178	UPPER IMPELLER :
	CRITICAL SPEED (REV/MIN)
NIL	IMPELLER ADJUSTMENT
NIL	UPPER IMPELLER :
	LOWER IMPELLER :
	(IMPELLER HUBS ARE KEYED TO SHAFT AND BLADES ARE BOLTED TO HUBS)
0.75kw	⑥ MOTOR-TEFC/1P55/VERTICAL FLANGE MOUNTED/STD
1410	SPEED (REV/MIN)
80	FRAME
415/3/50.	RATING 9V/ph/Hz
HELICAL	⑦ GEAR BOX : (BONFIGLIOLI) AS 30F/17.11:1/P80/V1
RB 144	⑧ FLEXIBLE COUPLING PIN & BUSH TYPE.
SS : 304	⑨ REMOVABLE COUPLING (LIGHTNIN DESIGN)
3.62 KN.	⑩ DESIGN DATA
0.059 KNM.	DOWN WARD LOAD
0.106 KNM.	TORQUE
	BENDING MOMENT
	DESIGN LOADS ARE GREATER THAN ACTUAL
	LOADS BY A SUITABLE FACTOR CONSISTENT
	WITH CONSTRUCTION CODES AND LIGHTNIN
	EXPERIENCE
116 N	FORCE ON EACH BAFFLE.
	FOR BAFFLE DESIGN CALCULATED LOAD TO BE
	CONSIDERED AS A POINT LOAD ACTING AT THE
	INNER EDGE OF THE BAFFLE OPPOSITE THE
	IMPELLER CENTER LINE.
	THE LOAD IS A LIVE LOAD & FLUCTUATING
	COMPONENT BE CONSIDERED TO BE ACTING ABOUT
	THE SAME POINT AS DETAILED ABOVE THE
	MAGNITUDE OF THIS FLUCTUATING COMPONENT
	IS TO BE CONSIDERED AS 50% OF THE CALCULATED
	LOAD
23 Kg.	⑪ MIXER WEIGHT
17 Kg.	GEAR BOX
145 Kg.	MOTOR
185 Kg.	SHAFT/IMPELLER/COUPLING/LANTERN/BRG.HSG.
	TOTAL
299X135X05	⑫ DIMENSIONS OF BLADES
	A510 E22-Ø690

DESCRIPTION	BRG.NO.	QTY.	BRG.MAKE
TAPER ROLLER BEARING	32010X	2NOS.	SKF

MIXER QTY. - 02 NOS.

ALL DIMENSIONS ARE IN MM



URANIUM CORPORATION OF INDIA LIMITED
A GOVT OF INDIA ENTERPRISE
TUMMALAPALLE PROJECT

DRAWN BY : M.RAMANJANEYULU

CHECKED BY :

APPROVED BY :

DATE : 13.12.2017

REV NO. 00

G.A. FOR AGITATOR
ASSEMBLY
RLGHQ--0.75

SDU SLURRY TAG.NO. :- 8AG/9A/B

UCIL/TMPL/DWG/166

16 NOS. Ø18 X THRU'
AS SHOWN
FOR M16X60 BOLTS
WITH HEX. NUT PL. WASHER
& TAPER WASHER