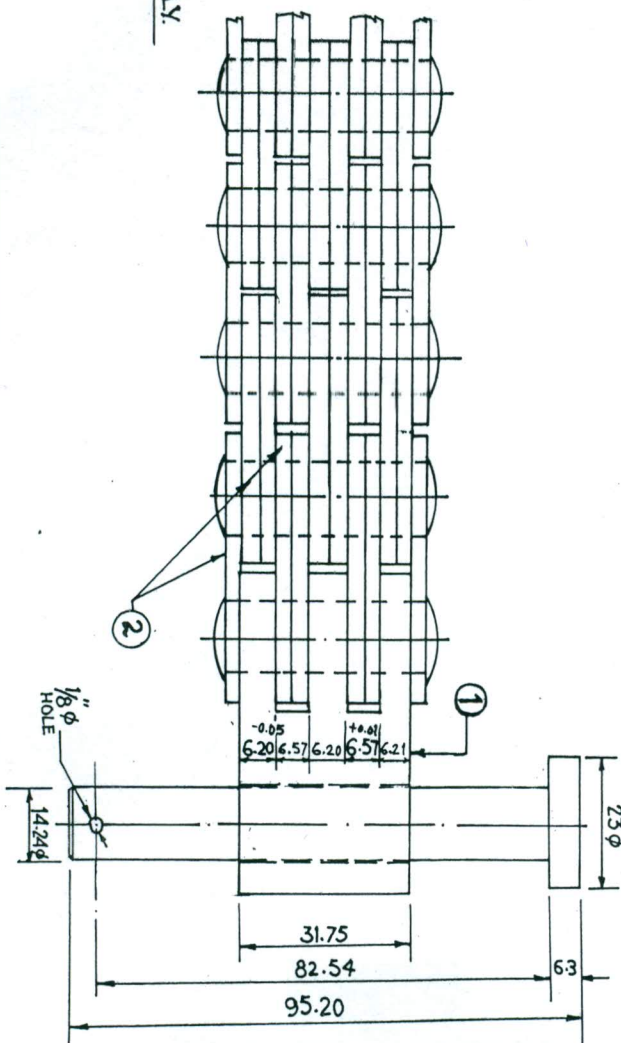


CHAIN ASSLY



ITEM NO.	REVISION	SURFACE	INITIAL	DATE	FIG. NO.	PART NO.	DESCRIPTION	NO. OF	DATE	SIGNATURE	WT.	REMARKS
1		UNMACHINED SURFACE			1		END LINK					
2		ROUGH MACHINING			2		CHAIN LINK					
3		MACHINED SURFACE			3		CHAIN PIN					
4		FINE FINISH (GRIND)			4							
5		SUPERFINE FINISH (GRIND)			5							

CHAIN ASSLY FOR HOPPER LOADER

PT. No - 021000000134

URANIUM CORPORATION OF INDIA LTD.

JADUGUDA MINES

DRG No - D₉EM/1239

