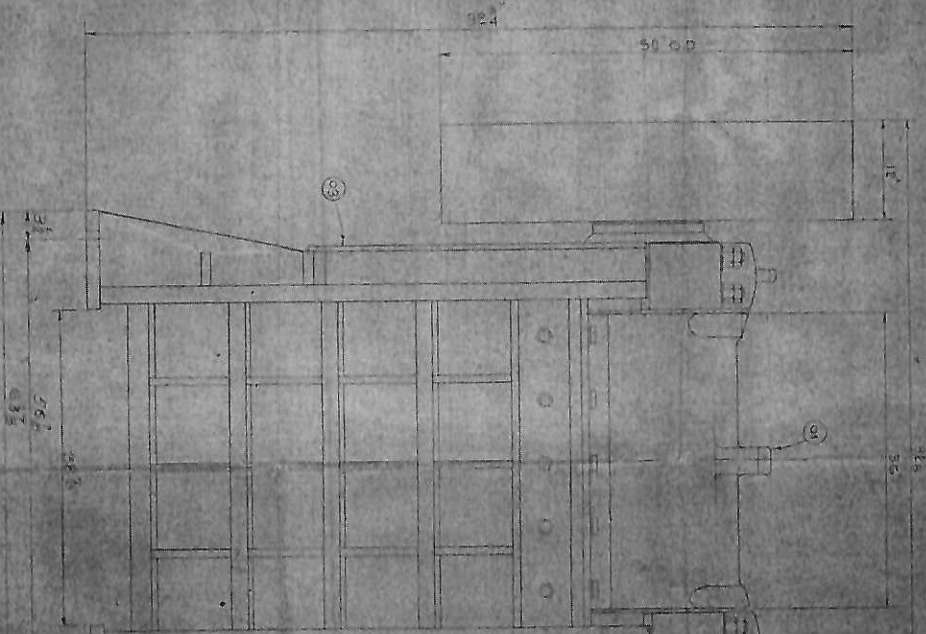


JAW CRUSHER ASSEMBLY  
WITH DISCHARGE CHUTE

36.0  
55.0  
36.0

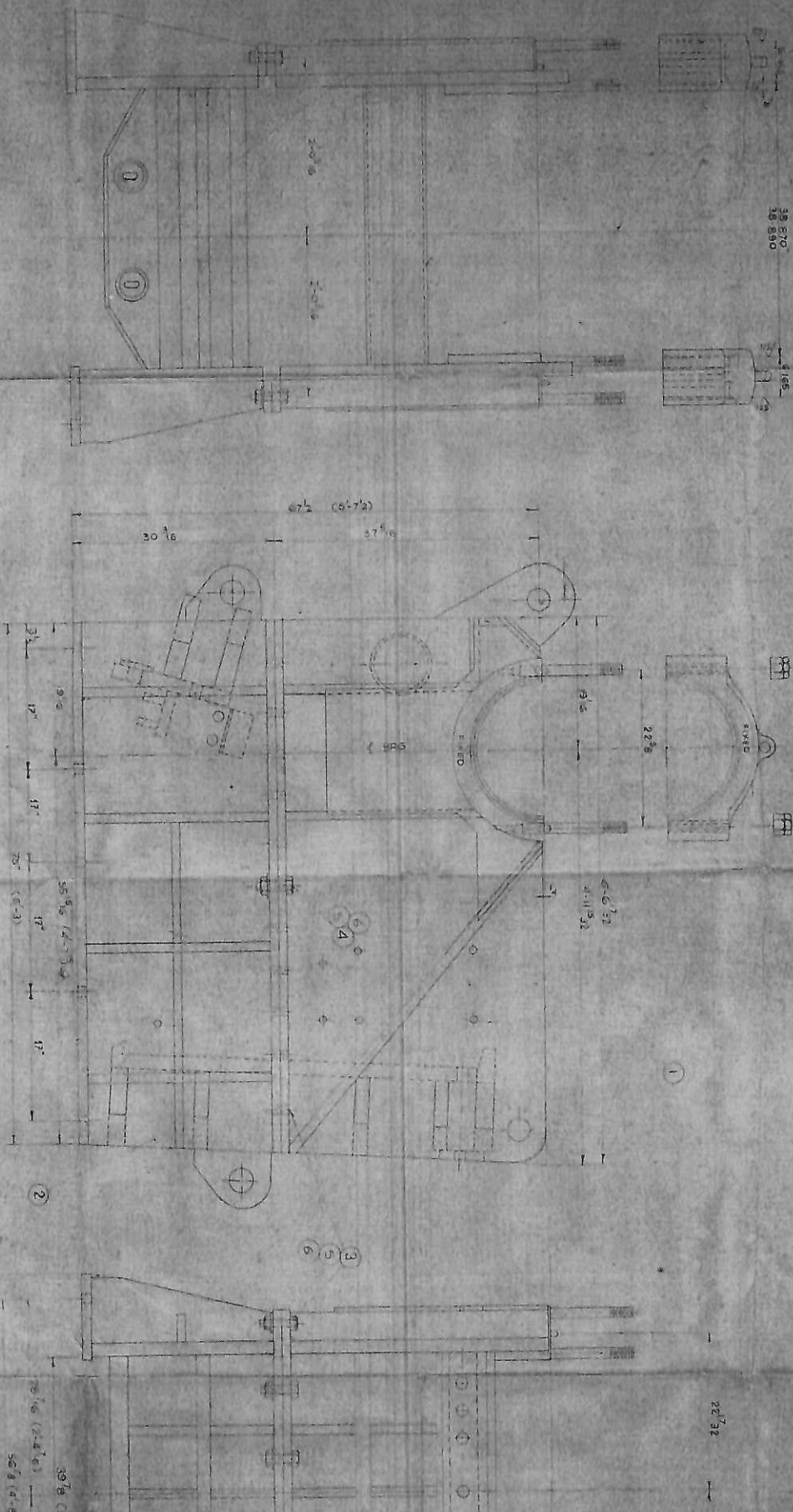


1. JAW CRUSHER ASSEMBLY  
2. DISCHARGE CHUTE  
3. JAW PLATE  
4. JAW PLATE  
5. JAW PLATE  
6. JAW PLATE  
7. JAW PLATE  
8. JAW PLATE  
9. JAW PLATE  
10. JAW PLATE  
11. JAW PLATE  
12. JAW PLATE  
13. JAW PLATE  
14. JAW PLATE  
15. JAW PLATE  
16. JAW PLATE  
17. JAW PLATE  
18. JAW PLATE  
19. JAW PLATE  
20. JAW PLATE  
21. JAW PLATE  
22. JAW PLATE  
23. JAW PLATE  
24. JAW PLATE  
25. JAW PLATE  
26. JAW PLATE  
27. JAW PLATE  
28. JAW PLATE  
29. JAW PLATE  
30. JAW PLATE  
31. JAW PLATE  
32. JAW PLATE  
33. JAW PLATE  
34. JAW PLATE  
35. JAW PLATE  
36. JAW PLATE  
37. JAW PLATE  
38. JAW PLATE  
39. JAW PLATE  
40. JAW PLATE  
41. JAW PLATE  
42. JAW PLATE  
43. JAW PLATE  
44. JAW PLATE  
45. JAW PLATE  
46. JAW PLATE  
47. JAW PLATE  
48. JAW PLATE  
49. JAW PLATE  
50. JAW PLATE  
51. JAW PLATE  
52. JAW PLATE  
53. JAW PLATE  
54. JAW PLATE  
55. JAW PLATE  
56. JAW PLATE  
57. JAW PLATE  
58. JAW PLATE  
59. JAW PLATE  
60. JAW PLATE  
61. JAW PLATE  
62. JAW PLATE  
63. JAW PLATE  
64. JAW PLATE  
65. JAW PLATE  
66. JAW PLATE  
67. JAW PLATE  
68. JAW PLATE  
69. JAW PLATE  
70. JAW PLATE  
71. JAW PLATE  
72. JAW PLATE  
73. JAW PLATE  
74. JAW PLATE  
75. JAW PLATE  
76. JAW PLATE  
77. JAW PLATE  
78. JAW PLATE  
79. JAW PLATE  
80. JAW PLATE  
81. JAW PLATE  
82. JAW PLATE  
83. JAW PLATE  
84. JAW PLATE  
85. JAW PLATE  
86. JAW PLATE  
87. JAW PLATE  
88. JAW PLATE  
89. JAW PLATE  
90. JAW PLATE  
91. JAW PLATE  
92. JAW PLATE  
93. JAW PLATE  
94. JAW PLATE  
95. JAW PLATE  
96. JAW PLATE  
97. JAW PLATE  
98. JAW PLATE  
99. JAW PLATE  
100. JAW PLATE

NO.	DESCRIPTION
01	SHAW
02	SHAW
03	SHAW
04	SHAW
05	SHAW
06	SHAW
07	SHAW
08	SHAW
09	SHAW
10	SHAW
11	SHAW
12	SHAW
13	SHAW
14	SHAW
15	SHAW
16	SHAW
17	SHAW
18	SHAW
19	SHAW
20	SHAW
21	SHAW
22	SHAW
23	SHAW
24	SHAW
25	SHAW
26	SHAW
27	SHAW
28	SHAW
29	SHAW
30	SHAW
31	SHAW
32	SHAW
33	SHAW
34	SHAW
35	SHAW
36	SHAW
37	SHAW
38	SHAW
39	SHAW
40	SHAW
41	SHAW
42	SHAW
43	SHAW
44	SHAW
45	SHAW
46	SHAW
47	SHAW
48	SHAW
49	SHAW
50	SHAW
51	SHAW
52	SHAW
53	SHAW
54	SHAW
55	SHAW
56	SHAW
57	SHAW
58	SHAW
59	SHAW
60	SHAW
61	SHAW
62	SHAW
63	SHAW
64	SHAW
65	SHAW
66	SHAW
67	SHAW
68	SHAW
69	SHAW
70	SHAW
71	SHAW
72	SHAW
73	SHAW
74	SHAW
75	SHAW
76	SHAW
77	SHAW
78	SHAW
79	SHAW
80	SHAW
81	SHAW
82	SHAW
83	SHAW
84	SHAW
85	SHAW
86	SHAW
87	SHAW
88	SHAW
89	SHAW
90	SHAW
91	SHAW
92	SHAW
93	SHAW
94	SHAW
95	SHAW
96	SHAW
97	SHAW
98	SHAW
99	SHAW
100	SHAW



NOTE  
 1. WHILE DRILLING AND BOLLING  
 TO GET THE BOTTOM ELEMENTS  
 IN ONE PLANE EACH LIFT CAN  
 BE LIFTED BY 300 SQUARE INCH



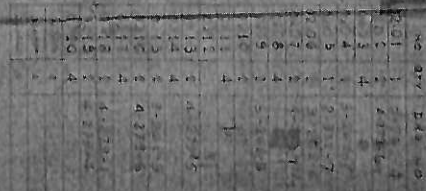
ONE MAIN FRAME ASSLY  
 PART NO. 1194-1-15  
 NET WT (EST.) - 3300 LBS  
 ITEM 10 - 03



MCNALLY-BIRD  
 ENGINEERING CO. LTD.  
 ENGINEERS OF SHARAH BAH

ITEM	QTY	UNIT	WGT
03	ONE	WAO	
04	1	WAO	
05	1	WAO	
06	1	WAO	
07	1	WAO	
08	1	WAO	
09	1	WAO	
10	1	WAO	
11	1	WAO	
12	1	WAO	
13	1	WAO	
14	1	WAO	
15	1	WAO	
16	1	WAO	
17	1	WAO	
18	1	WAO	
19	1	WAO	
20	1	WAO	
21	1	WAO	
22	1	WAO	
23	1	WAO	
24	1	WAO	
25	1	WAO	
26	1	WAO	
27	1	WAO	
28	1	WAO	
29	1	WAO	
30	1	WAO	
31	1	WAO	
32	1	WAO	
33	1	WAO	
34	1	WAO	
35	1	WAO	
36	1	WAO	
37	1	WAO	
38	1	WAO	
39	1	WAO	
40	1	WAO	
41	1	WAO	
42	1	WAO	
43	1	WAO	
44	1	WAO	
45	1	WAO	
46	1	WAO	
47	1	WAO	
48	1	WAO	
49	1	WAO	
50	1	WAO	
51	1	WAO	
52	1	WAO	
53	1	WAO	
54	1	WAO	
55	1	WAO	
56	1	WAO	
57	1	WAO	
58	1	WAO	
59	1	WAO	
60	1	WAO	
61	1	WAO	
62	1	WAO	
63	1	WAO	
64	1	WAO	
65	1	WAO	
66	1	WAO	
67	1	WAO	
68	1	WAO	
69	1	WAO	
70	1	WAO	
71	1	WAO	
72	1	WAO	
73	1	WAO	
74	1	WAO	
75	1	WAO	
76	1	WAO	
77	1	WAO	
78	1	WAO	
79	1	WAO	
80	1	WAO	
81	1	WAO	
82	1	WAO	
83	1	WAO	
84	1	WAO	
85	1	WAO	
86	1	WAO	
87	1	WAO	
88	1	WAO	
89	1	WAO	
90	1	WAO	
91	1	WAO	
92	1	WAO	
93	1	WAO	
94	1	WAO	
95	1	WAO	
96	1	WAO	
97	1	WAO	
98	1	WAO	
99	1	WAO	
100	1	WAO	





MECHANICAL TOOLS & EQUIPMENT

**McNALLY-BIRD**  
ENGINEERING CO. LTD.  
NEWCASTLE-UPON-TYNE, ENGL.



N	QTY	DIS NO	DESCRIPTION	UNIT	SER NO	DESCRIPTION
1	1	1	PISTON	16	1	PISTON
2	1	2	PISTON RINGS	16	2	PISTON RINGS
3	1	3	PISTON RINGS	16	3	PISTON RINGS
4	1	4	PISTON RINGS	16	4	PISTON RINGS
5	1	5	PISTON RINGS	16	5	PISTON RINGS
6	1	6	PISTON RINGS	16	6	PISTON RINGS
7	1	7	PISTON RINGS	16	7	PISTON RINGS
8	1	8	PISTON RINGS	16	8	PISTON RINGS
9	1	9	PISTON RINGS	16	9	PISTON RINGS
10	1	10	PISTON RINGS	16	10	PISTON RINGS
11	1	11	PISTON RINGS	16	11	PISTON RINGS
12	1	12	PISTON RINGS	16	12	PISTON RINGS
13	1	13	PISTON RINGS	16	13	PISTON RINGS
14	1	14	PISTON RINGS	16	14	PISTON RINGS
15	1	15	PISTON RINGS	16	15	PISTON RINGS
16	1	16	PISTON RINGS	16	16	PISTON RINGS
17	1	17	PISTON RINGS	16	17	PISTON RINGS
18	1	18	PISTON RINGS	16	18	PISTON RINGS
19	1	19	PISTON RINGS	16	19	PISTON RINGS
20	1	20	PISTON RINGS	16	20	PISTON RINGS
21	1	21	PISTON RINGS	16	21	PISTON RINGS
22	1	22	PISTON RINGS	16	22	PISTON RINGS
23	1	23	PISTON RINGS	16	23	PISTON RINGS
24	1	24	PISTON RINGS	16	24	PISTON RINGS
25	1	25	PISTON RINGS	16	25	PISTON RINGS
26	1	26	PISTON RINGS	16	26	PISTON RINGS
27	1	27	PISTON RINGS	16	27	PISTON RINGS
28	1	28	PISTON RINGS	16	28	PISTON RINGS
29	1	29	PISTON RINGS	16	29	PISTON RINGS
30	1	30	PISTON RINGS	16	30	PISTON RINGS
31	1	31	PISTON RINGS	16	31	PISTON RINGS
32	1	32	PISTON RINGS	16	32	PISTON RINGS
33	1	33	PISTON RINGS	16	33	PISTON RINGS
34	1	34	PISTON RINGS	16	34	PISTON RINGS
35	1	35	PISTON RINGS	16	35	PISTON RINGS
36	1	36	PISTON RINGS	16	36	PISTON RINGS
37	1	37	PISTON RINGS	16	37	PISTON RINGS
38	1	38	PISTON RINGS	16	38	PISTON RINGS
39	1	39	PISTON RINGS	16	39	PISTON RINGS
40	1	40	PISTON RINGS	16	40	PISTON RINGS
41	1	41	PISTON RINGS	16	41	PISTON RINGS
42	1	42	PISTON RINGS	16	42	PISTON RINGS
43	1	43	PISTON RINGS	16	43	PISTON RINGS
44	1	44	PISTON RINGS	16	44	PISTON RINGS
45	1	45	PISTON RINGS	16	45	PISTON RINGS
46	1	46	PISTON RINGS	16	46	PISTON RINGS
47	1	47	PISTON RINGS	16	47	PISTON RINGS
48	1	48	PISTON RINGS	16	48	PISTON RINGS
49	1	49	PISTON RINGS	16	49	PISTON RINGS
50	1	50	PISTON RINGS	16	50	PISTON RINGS
51	1	51	PISTON RINGS	16	51	PISTON RINGS
52	1	52	PISTON RINGS	16	52	PISTON RINGS
53	1	53	PISTON RINGS	16	53	PISTON RINGS
54	1	54	PISTON RINGS	16	54	PISTON RINGS
55	1	55	PISTON RINGS	16	55	PISTON RINGS
56	1	56	PISTON RINGS	16	56	PISTON RINGS
57	1	57	PISTON RINGS	16	57	PISTON RINGS
58	1	58	PISTON RINGS	16	58	PISTON RINGS
59	1	59	PISTON RINGS	16	59	PISTON RINGS
60	1	60	PISTON RINGS	16	60	PISTON RINGS